



1 Heron View, Cotswold Hoburne Cirencester, Gloucestershire.

DIRECTIONS

Please use the postcode GL7 5UQ or call the office at any time for detailed directions from your location.

SUMMARY

Unique holiday lodge situated close to all of the amenities of this popular holiday park in the heart of the Cotswold Lakes. It benefits from a south westerly facing decking with lake views, and remains extremely convenient for the many amenities of this popular site. The well equipped accommodation includes two good size bedrooms, bathroom, ensuite shower room, large living and dining areas as well as kitchen with built in appliances.



PROPERTY

The property is accessed into a large and open, triple aspect living space. There is a useful storage cupboard, double doors leading out to the decking with lake views beyond, and feature fireplace. There is plenty of space for separate sitting and dining areas. It is open to the spacious kitchen with breakfast bar, plenty of storage and built in appliances which include a slimline dishwasher and washing machine.



An inner hall leads through to the two good size bedrooms and family bathroom which has a suite comprising bath with shower over, wc, and wash hand basin. The second bedroom has a built in wardrobe, whilst the master bedroom includes a walk in wardrobe which houses the gas fired combi boiler, and an ensuite which comprises a shower cubicle, wc, and wash hand basin.

GARDENS

The property benefits from nearby parking and a south westerly facing deck overlooking the lake. It also takes

advantage of this luxurious development with plenty of communal gardens, as well as leisure amenities, to enjoy.

LOCATION

The property is located on the exclusive Cotswold Hoburne resort in the heart of the Cotswold Lakes. This particular property is exceptionally convenient for the main entertainment complex with facilities include a children's play area, bar and restaurant, indoor and outdoor heated pools, boating and fishing lakes, adventure golf, tennis court, multi-use games area, adventure playground, amusement arcade, shop, and much more! It is located on the edge of South Cerney which is an attractive village with a further shops and popular pubs and is within easy reach of the many beautiful walks and leisure facilities that the Cotswold Lakes has to offer.

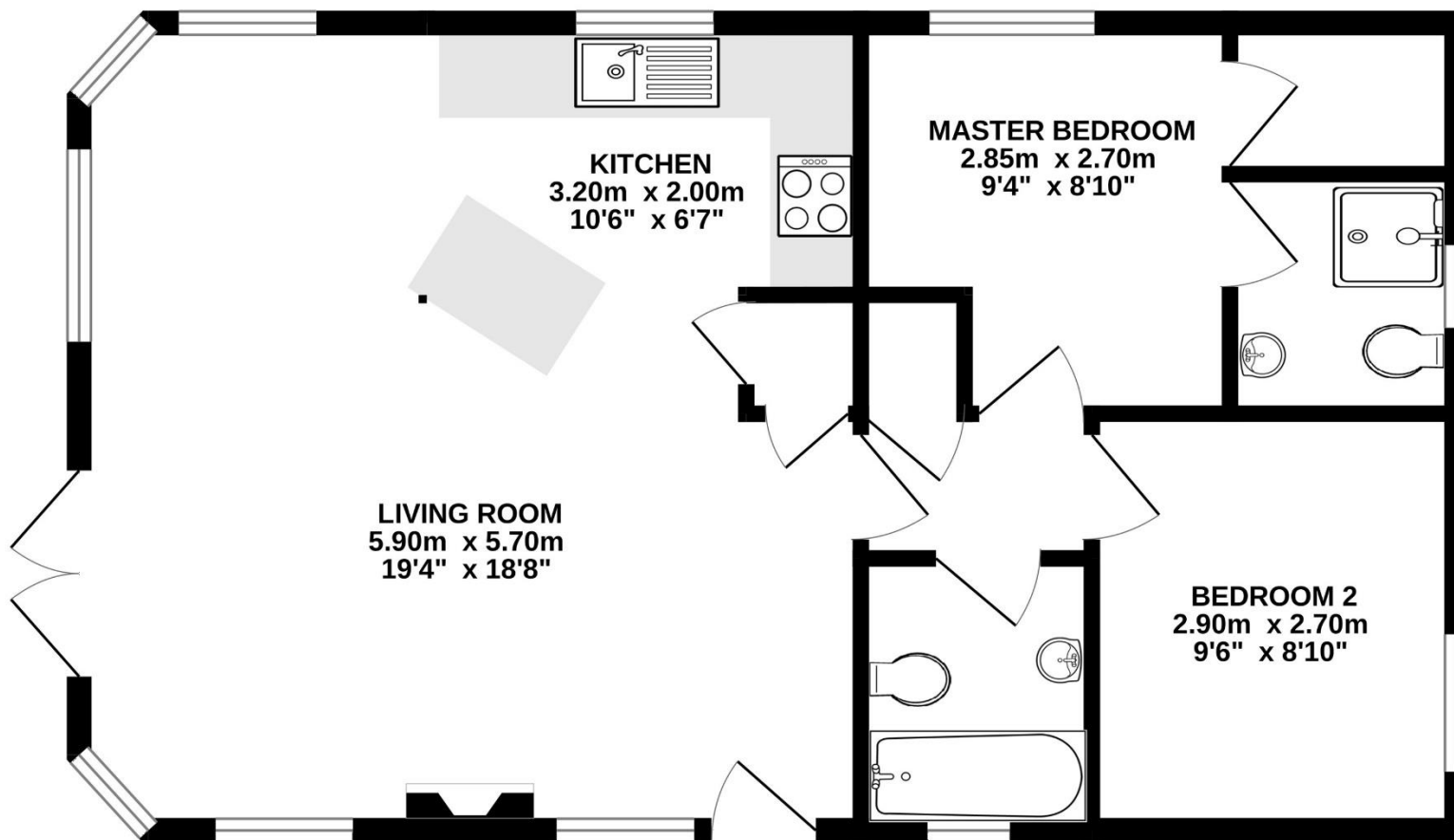
VIEWING

Viewing is available by appointment 7 days a week. Please call your local office to arrange.

AGENTS NOTE

We wish to inform prospective purchasers that we have prepared these sales particulars as a general guide. We have not carried out a survey, nor have we tested any services, appliances or any specific fittings at the property. Room sizes should not be relied upon for carpets and furnishings.





Whilst every attempt has been made to ensure the accuracy of the floorplan contained here, measurements of doors, windows, rooms and any other items are approximate and no responsibility is taken for any error, omission or mis-statement. This plan is for illustrative purposes only and should be used as such by any prospective purchaser. The services, systems and appliances shown have not been tested and no guarantee as to their operability or efficiency can be given.
Made with Metropix ©2025

